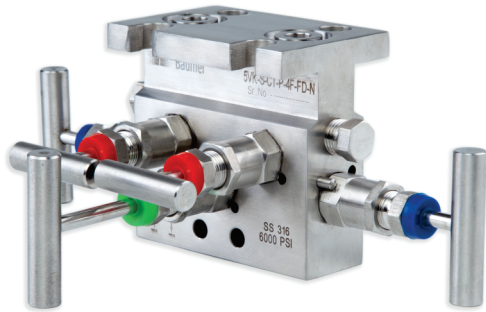


# 5VK

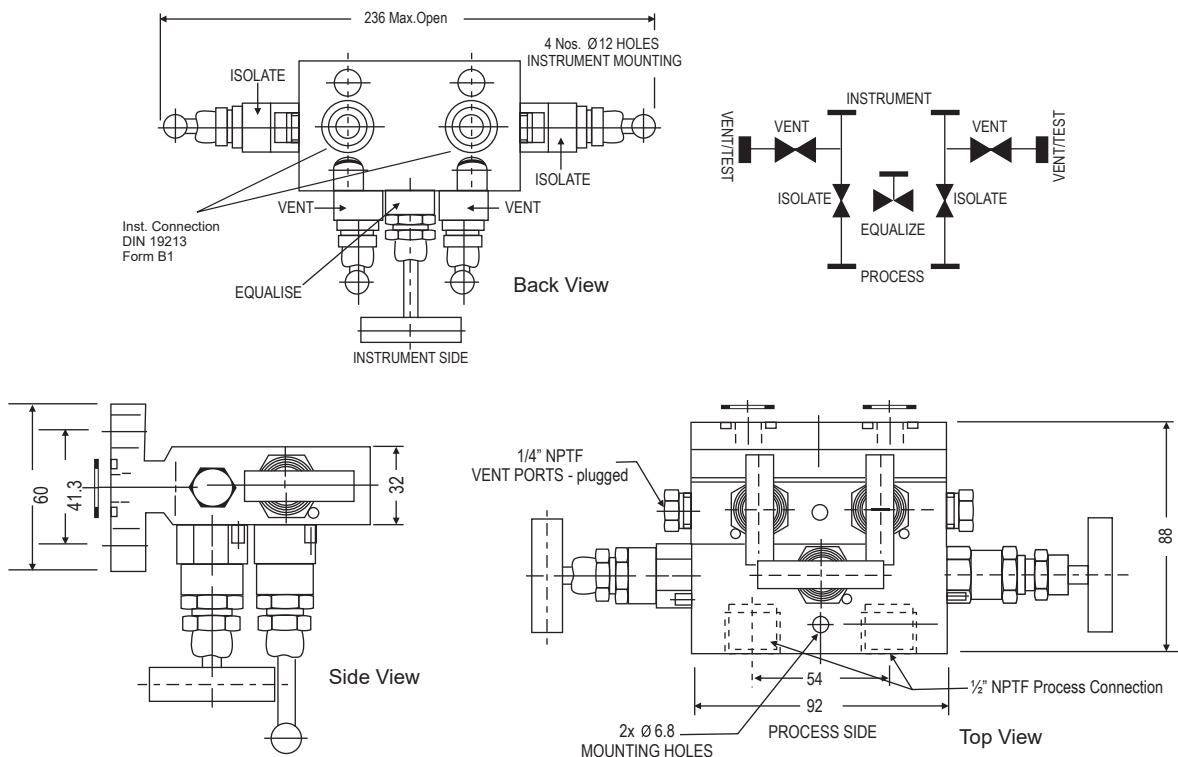
Direct mount (pipe to flange)

With threaded female ports on front side for instrument connection along with extended Flange for process connection. The two vent bonnets along with equalizing bonnet is positioned on the top side. The two isolation bonnets are positioned on left and right hand sides.



### Standard Connection

Product	Process side	Instrument side	Vent/Test
5VK	1/2" NPT female	Flange	1/4" NPT Female



Notes : • Drawings are not to scale. • All Dimensions are in mm.

**Specifications - Standard Version**

Body	: SS 316
Stem	: SS 316
Valve assembly	: SS 316
'T' bar handle	: SS 304
Maximum working pressure	: 6000 psi
Maximum working temperature	: 240°C
Packing	: PTFE
Type of stem	: Type CT; Stem with conical metal tip
Drain port	: 1/4" NPT [F]; provided with SS 316 plug
Bracket mounting holes	: 4 Nos. with 12 mm ID

**How To Order**

Body Material	Stem Type	Stem Packing	Size = Inlet x Outlet	Connections	Threads
C = Carbon Steel	CT (std)	P = PTFE (std)	4F= 1/2" x Flange	FD = Female x Flange (54mm)	N = NPT (ANSI B 1.20.1)
S = SS 316 (std)	DS	G = Grafoil		SW = Socket Weld	P = BSPP (BS 2779, ISO 228/1)
S4 = SS 304					B = BSPT (BS 21, ISO 7/1)
SL = SS 316L					
M4 = Monel 400					
M5 = Monel 500					
H = Hastelloy C					

**Options**

<b>TF</b>	: Compliance to NACE standard
<b>SG</b>	: For Oxygen service, valves are supplied cleaned, degreased and suitably packed.
<b>GH</b>	: Material test certificate*
<b>GO</b>	: Hydro test certificate
<b>MB</b>	: Mounting Bracket
<b>PRF</b>	: PTFE Ring For Flange Seal
<b>GRF</b>	: Grafoil Ring For Flange Seal

\* Material test certificate will be provided for wetted parts only with chemical composition testing. for others, please consult factory.

**Example**

To place an order simply refer to the codes in the table.

Valve Type : Body Material + Stem Type + Stem Packing + Size + Connections + Threads + Options

5VK + S + CT + P + 4F + FD + N = 5VK . S . CT . P . 4F . FD . N . Options

Note :

- The weld prepared types are available with female plain end - suitable for socket weld.
- Anti-tamper bonnet - special design on request with locking arrangement if desired.

Note : Specifications and dimensions given in this product catalogue represents the state of engineering at the time of printing .  
Modifications may take place and materials specified may be replaced by others without prior notice.